



ROLLER SHADE COLLECTION
PRICING GUIDE

TABLE OF CONTENTS

Basic Guidelines.....	1
Overview.....	2
Measuring Instructions.....	3-4
Fabric Selection.....	5-7
Price Charts.....	8-11
Price Charts 1.....	8
Price Charts 2.....	8
Price Charts 3.....	9
Price Charts 4.....	9
Price Charts 5.....	10
Price Charts 6.....	10
Price Charts 7.....	11
Price Charts 8.....	11
Options.....	12-17
Child Safety & Warranty.....	18

BASIC GUIDELINES

- Shades can be ordered inside mount (deductions from ordered size will be taken), outside mount (no deductions on width will be taken), and fabric width (outside bracket to outside bracket size will vary depending on control being used).
- Measure the desired width and height. For outside mount it is recommended to add at least 2” to width to minimize light gap.
- Shades that are not mounted level may telescope (shade rolling off the tube to one side or the other) and may cause shade damage.
- Shades width that is less than half the height may cause shades to telescope even if shades are mounted level. The larger the length to width ratio, the more likely and severe the telescoping may become. Telescoping damage is not covered under warranty.
- Shades may be ordered with clutches, cordless, and motorized (see motorization pricing guide).

OVERVIEW

PROUDLY MANUFACTURED IN THE USA

With an extensive selection of fabrics, manual controls and automation options, the Automated Motorized Shades Roller Shade collection is a complete solution for all of your solar control needs. From fabrics that offer complete light blockage to materials that provide excellent protection from the sun's harmful rays while still permitting an unobstructed view, you are sure to find a choice that will serve your customers' needs. Here are a few of the many features available in this line:

Available Features & Options	Benefit
Continuous Loop Clutch Operation	Smooth, easy lifting with exact positioning
Universal, Color Coordinated Mounting Brackets with Covers	Easy installation and removal of the shade Provides a finished look even without valances
Heat Sealed Bottom Hem	Sleek, clean and durable - available with sealed ends
Optional Fabric Wrapped Hem Bar Color Coordinated	Decorative hem bar covered by fabric on the front, color coordinated exposed on the back
Optional Cassette Valance	Valance system with fabric insert, installs as a complete system
Optional Fascia & Fabric Valance	Available in matching colors, provides a clean method of concealing shades
Motorization Available	Eliminates lift cords, raises and lowers shades at the touch of a button
Color Coordinating Nylon Beaded Chain or Stainless Steel Chain	Standard on every manual shade

Fabrics widths vary. Check the color coordination chart to determine the maximum width for your selected fabric.

FABRIC ORIENTATION

- When displaying multiple shades in the same room, we recommend all shades be ordered with the same fabric orientation for a consistent look.
- Due to the nature of solar/roller shades, the material may curl along its vertical edge when the fabric is railroaded. This is not considered a defect of the product.
- Shades ordered within the maximum width of the fabric will be vertically oriented.
- Shades ordered wider than the maximum width of the fabric will be horizontally oriented (the width is used for the height) commonly referred to as railroaded. See the fabric compatibility index to determine if the fabric you select can be railroaded.
- Railroaded shades with an ordered height greater than the maximum fabric width minus 6 inches may have a visible seam. See the fabric compatibility index to determine if the fabric you select can be seamed and if the seam will be visible.

**Visible Seams Will Be Placed as High Up as Possible*

**STANDARD
FABRIC
ORIENTATION**

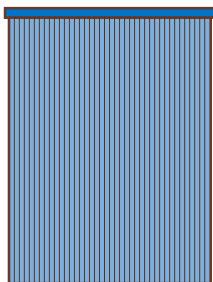


Fig. 1

**FABRIC TURNED
WIDTH FOR HEIGHT**

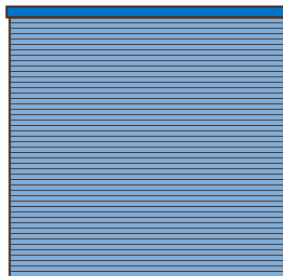


Fig. 2

**LARGE SHADE MAY
HAVE VISIBLE SEAMS**

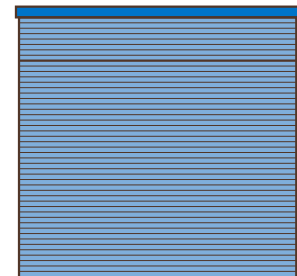


Fig. 3

MEASURING INSTRUCTIONS

MEASUREMENTS

Accurate measurements are absolutely essential. The measurements you provide are used first to price the shade, and then to custom fabricate it to the specified size. The dimensions supplied on the order form must be correct for the shade to properly fit the window opening. As a dealer, it is your responsibility to measure and order accurately. Automated Motorized Shades cannot be held accountable for incorrect ordering information.

BASIC GUIDELINES

Measuring for Roller Shades is similar to measuring for most window coverings. Follow these basic guidelines to ensure a smooth installation:

- Always use a steel tape measure, preferably $\frac{3}{4}$ " to 1" wide.
- **Measure width first, then height.**
- Measure each window separately, even if they appear to be the same size.
- Survey the window area carefully and make additional measurements, if necessary.
- Record your measurements on a worksheet.

CONSISTENCY

- To ensure color consistency and avoid dye lot variation, please order all shades for the same room at the same time.
- Due to the nature of the weaving process, some imperfections in the weave are normal.
- Pattern Alignment: Due to random design, exact alignment of some shade weaves is not possible, nor is centering of the pattern across the width of shades and fabric covered valance options.

The diagram shown below is for clutch & battery operated roller shades.

WHEN SHADE IS ORDERED IB

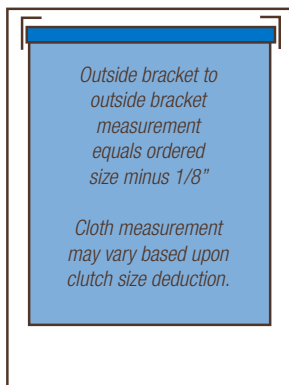


Fig. 4

INSIDE MOUNT (IB)

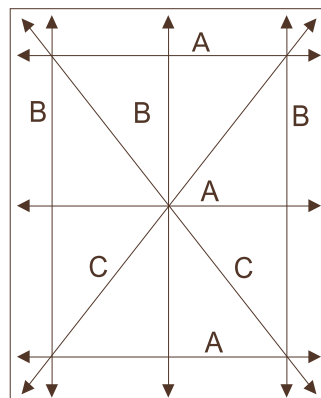


Fig. 5

INSIDE OR OUTSIDE MOUNT

How you take your measurements will vary depending upon whether the shade fits within the window opening (inside mount or IB Fig.4 and Fig. 5) or overlaps the window opening (outside mount or OB Fig. 6 and Fig.7) With inside mounts, note that the shade fabric will be about $\frac{13}{8}$ " narrower than the window opening, so if complete privacy and light control is desired, optional side panels and bottom channels can be ordered.

"ROUNDING" YOUR MEASUREMENTS

Dimensions on the order form should be accurate to within $\frac{1}{8}$ ". However, with inside mounts, always round the width measurement down to the nearest $\frac{1}{8}$ ". Rounding up could result in a shade that is too wide to fit within the window opening. For example, for an inside mount, $\frac{3}{16}$ " would round to $\frac{1}{8}$ ". The only time this is not the case is when measuring for Parallel Shades, which need to be accurate to a $\frac{1}{16}$ "

MEASURING FOR INSIDE MOUNTS (FIG. 5)

1. Measure the width about $1\frac{1}{4}$ " down from the top of the window, which typically is where the installation brackets will be mounted. Remember to round down to the nearest $\frac{1}{8}$ ". This measurement is the ordering width of the shade. Do not make any deductions from this width - all necessary deductions will be made automatically when the shade is fabricated. Measure the width at the center and bottom of the window. If the width narrows by more than 1" from the top measurement, the customer should consider an outside mount.
2. Measure the height of the window opening at three locations, as shown in Fig. 5 and order the shortest measurement. Again, make no deductions. All necessary deductions will be made when the shade is fabricated.
3. Measure window on the diagonal. If the two diagonal dimensions are not exactly the same, it may be more appropriate to specify an outside mount shade for optimal light control and privacy.
4. Measure depth of window for mounting brackets

Note: Acceptable tolerances for all dimensions are plus or minus $\frac{3}{32}$ "

MEASURING INSTRUCTIONS

MEASURING FOR OUTSIDE AND CEILING MOUNTS

- Measure the desired width and height. To minimize light leakage, it is recommended that the shade overlap the window opening at least 1 ½” on each side, as well as at the top and bottom.
- Measure the width at the location where you want the brackets, and use this measurement as your ordering width for the shade.
- Measure the height from where the top of the roller will be located to where you want the bottom of the shade.
- Please note the allowances pictured below for Roller Shades (Fig.6) to assure proper overlap or order Roller Shade as a cloth measurement (Fig.7).

CLOTH MEASUREMENTS FOR ROLLER SHADES

- Measure the desired width and height. To minimize light leakage, it is recommended that the shade overlap the window opening at least 1 ½” on each side, as well as at the top and bottom. As with inside mounts, do not make any deductions from your measurements.
- Measure the width at the location where you want the fabric, and use this measurement as your ordering width for the shade.
- Measure the height from where the top of the roller shade brackets will be located to where you want the bottom of the shade.
- Please note the allowances pictured (Fig. 7) to assure that you have sufficient room to mount the bracket.

TELESCOPING (ALSO KNOWN AS TRACKING)

Telescoping is defined as the shade rolling off the tube to one side or the other while being raised. The main causes are:

- A shade that is installed out of level. The more out of level a shade is installed, the more pronounced the telescoping.
- Shades that are mounted uneven on the roller tube or cut out of square. (Automated Motorized Shades uses state of the art shade cutting tables and mounting methods that virtually eliminate this cause)
- Width vs. Height – When the width of a roller shades equals less than fifty percent of the height, telescoping can occur even if the shade is installed level. This issue becomes exaggerated as the shade becomes narrower and/or taller. This is especially important to note on Motorized Roller Shades, since the motor can not sense that the shade may be telescoping, it will continue to run causing irreparable damage to the shade cloth. Telescoping damage is not covered under warranty and is considered to be an improper installation issue. A viable option for narrow/tall windows is the Solar Roman Shade.

WHEN SHADE IS ORDERED OB

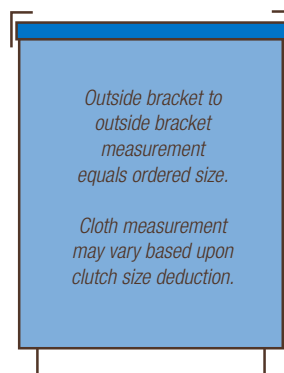


Fig. 6

WHEN SHADE IS ORDERED TO CLOTH SIZE

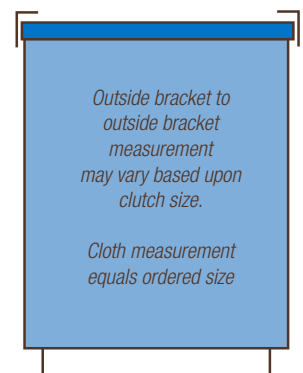


Fig. 7

FABRIC SELECTION

Vendor	Name	Roller Shade Price Chart	Opacity	Maximum Fabric Width	Railroad Available
Phifer	Sheerweave© 1000	2	25%	96"	Yes
Phifer	Sheerweave© 2000	5	5%	126"	Yes
Phifer	Sheerweave© 2100	4	10%	98"	Yes
Phifer	Sheerweave© 2360	4	10%	98"	Yes
Phifer	Sheerweave© 2390	5	5%	126"	Yes
Phifer	Performance + 2390	8	5%	96"	Yes
Phifer	Sheerweave© 2410	5	3%	126"	Yes
Phifer	Performance + 2410	8	3%	96"	Yes
Phifer	Sheerweave© 2500	6	1%	126"	Yes
Phifer	Performance + 2500	8	1%	96"	Yes
Phifer	Sheerweave© 2701	6	1%	126"	Yes
Phifer	Sheerweave© 2703	5	3%	126"	Yes
Phifer	Sheerweave© 2705	5	5%	126"	Yes
Phifer	Sheerweave© 2710	4	10%	98"	Yes
Phifer	Sheerweave© 3000	3	14%	96"	Yes
Phifer	Sheerweave© 4000	5	5%	126"	Yes
Phifer	Sheerweave© 4100	4	10%	98"	Yes
Phifer	Sheerweave© 4400	6	3%	126"	Yes
Phifer	Sheerweave© 4500	5	5%	98"	Yes
Phifer	Sheerweave© 4550	5	5%	98"	Yes
Phifer	Sheerweave© 4600	6	3%	98"	Yes
Phifer	Sheerweave© 4650	6	3%	98"	Yes
Phifer	Sheerweave© 4800	6	1%	126"	Yes
Phifer	Sheerweave© 4901	6	1%	98"	Yes
Phifer	Sheerweave© 4903	6	3%	98"	Yes
Phifer	Sheerweave© 5000	6	3-10%	98"	No
Phifer	Sheerweave© 7000	8	Blackout	118"	Yes
Phifer	Sheerweave© 7100	6	Blackout	96"	Yes
Phifer	Sheerweave© 7200R	5	Blackout	118"	No
Phifer	Sheerweave© 7250R	4	Translucent	118"	No
Phifer	Sheerweave© 7400	8	Blackout	118"	No
Phifer	Sheerweave© 7450	7	Translucent	118"	No
Phifer	Sheerweave© 7500	5	Blackout	118"	Yes
Phifer	Sheerweave© 7500R	3	Blackout	118"	Yes
Phifer	Sheerweave© 7600	7	Blackout	118"	No
Phifer	Sheerweave© 7650	5	Translucent	118"	No
Phifer	Sheerweave© 7700R	6	Blackout	118"	No
Phifer	Sheerweave© 7750R	4	Translucent	118"	No

Cut Yardage Available in Limited Patterns - Call Customer Service For Pricing and Availability.

FABRIC SELECTION

Vendor	Name	Roller Shade Price Chart	Opacity	Maximum Fabric Width	Railroad Available
Phifer	Sheerweave© 7800	7	Blackout	118"	No
Phifer	Sheerweave© 7850	5	Translucent	118"	No
Phifer	Basic 3% & 5%	4	3%	98"	Yes
Phifer	Infinity2 1%	8	1%	98"	Yes
Phifer	Infinity2 3%	8	3%	98"	Yes
Phifer	Infinity2 5%	7	5%	98"	Yes
Phifer	Suntex 80	3	25%	96"	Yes
Phifer	Suntex 90	3	10%	96"	Yes
Phifer	Suntex 95	5	5%	126"	Yes
Phifer	Suntex 90 Design	6	10%	96"	Yes
Phifer	Suntex 97	6	3%	126"	Yes
Mermet	Avila Daylight	3	Translucent		
Mermet	Avila Twilight	4	Blackout	110"	Yes
Mermet	Avila Twilight FR	7	Blackout	110"	Yes
Mermet	E Screen 1%	6	1%	122"	Yes
Mermet	E Screen 3%	5	3%	122"	Yes
Mermet	E Screen 5%	4	5%	122"	Yes
Mermet	E Screen 10%	4	10%	122"	Yes
Mermet	E Screen Chroma 3%	8	3%	94"	Yes
Mermet	E Screen Deco 1%	6	1%	122"	Yes
Mermet	E Screen Deco 3%	6	3%	122"	Yes
Mermet	E Screen Kool Black 1%	8	1%	122"	Yes
Mermet	E Screen Kool Black 3%	8	3%	122"	Yes
Mermet	E Screen Kool Black 5%	7	5%	122"	Yes
Mermet	Flocke	8	Blackout	94"	Yes
Mermet	M Deco Screen 3%	5	3%	98"	No
Mermet	M Deco Screen 5%	5	5%	98"	No
Mermet	M Screen 1%	6	1%	122"	Yes
Mermet	M Screen 3%	5	3%	122"	Yes
Mermet	M Screen 5%	4	5%	122"	Yes
Mermet	M Screen Chroma 3%	8	3%	112"	Yes
Mermet	Natte 3%	6	3%	98"	Yes
Mermet	Natte 5%	6	5%	98"	Yes
Mermet	Natte 10%	6	10%	98"	Yes
Mermet	S Screen 1%	6	1%	122"	No
Mermet	S Screen 4%	5	4%	122"	No
Mermet	S Screen Naturals 5%	5	5%	98"	No
Mermet	T Screen 1%	6	3%	98"	Yes
Mermet	T Screen 3%	5	3%	98"	Yes

Cut Yardage Available in Limited Patterns - Call Customer Service For Pricing and Availability.

FABRIC SELECTION

Vendor	Name	Roller Shade Price Chart	Opacity	Maximum Fabric Width	Railroad Available
Mermet	T Screen Deco 1%	6	1%	122"	Yes
Mermet	T Screen Deco 3%	5	3%	122"	Yes
Mermet	T Screen Deco 5%	5	5%	122"	Yes
Mermet	T Screen Kool Black 1%	7	1%	122"	Yes
Mermet	T Screen Kool Black 3%	7	3%	122"	Yes
Mermet	T Screen Kool Black 5%	7	5%	122"	Yes
Mermet	Verona Daylight	4	1%	118"	Yes
Mermet	Verona Twilight	7	Blackout	118"	Yes
Mermet	Vizela	8	Translucent	94"	Yes
AMS	Blues	6	Translucent	110"	Yes
AMS	Eco Lux	7	Translucent	110"	Yes
AMS	Eco Silk	6	Translucent	110"	Yes
AMS	Fashion Screen	6	3%	110"	Yes
AMS	Linen	7	Translucent	110"	Yes
AMS	Linen Look B/O	5	Blackout	94"	Yes
AMS	Mambo	5	Translucent	110"	Yes
AMS	Milan B/O White Back	6	Blackout	110"	Yes
AMS	Orient B/O Color Back	4	Blackout	94"	Yes
AMS	Orient B/O FR	5	Blackout	94"	Yes
AMS	Orient B/O White Back	4	Blackout	94"	Yes
AMS	Orient Light Filtering	3	Translucent	94"	Yes
AMS	Orient Light Filtering FR	4	Translucent	94"	Yes
AMS	Orient Transparent	3	Transparent	94"	Yes
AMS	Pompei	7	Transparent	110"	Yes
AMS	Puglia	4	Transparent	110"	Yes
AMS	Reve	6	Transparent	110"	Yes
AMS	Rimini	4	Transparent	110"	Yes
AMS	Satino	7	Translucent	110"	Yes
AMS	Sorrento Blackout	4	Blackout	110"	Yes
AMS	Swing	7	Translucent	110"	Yes
AMS	Trento	3	Translucent	110"	Yes
AMS	Trento B/O	4	Blackout	110"	Yes
AMS	Varese	7	Transparent	110"	Yes
AMS	Venezia	4	Transparent	110"	Yes
AMS	Verona	3	Translucent	94"	Yes
AMS	Verona B/O	6	Blackout	100"	Yes
AMS	Vinyl FR	4	Blackout	98.4"	Yes
AMS	Signature Series	3	1%, 3%, 5%, 10%	118"	Yes
VT	Vinyl Tech Blackout	1	Blackout	72"	Yes
AMS	C Screen 3%, 5%, Linen	5	5%	118"	Yes
AMS	D Screen	5	5%	118"	Yes

Cut Yardage Available in Limited Patterns - Call Customer Service For Pricing and Availability.

PRICE CHARTS 1 & 2

PRICE CHART 1

VINYL TECH BLACKOUT

← Width →

	37"	46"	55"	64"	73"	78"	84"	96"	109"	121"	132"	144"	156"	168"
36"	103	133	162	184	202	269	278	308	399	426	503	528	551	585
48"	111	139	174	204	218	280	303	351	435	458	543	578	585	628
60"	118	147	181	214	232	301	322	377	474	543	567	601	628	667
72"	127	164	195	227	248	346	389	444	528	667	715	782	847	927
84"	137	171	210	243	262	373	410	484	601	710	817	834	916	979
96"	142	180	216	258	295	395	444	519	667	801	852	886	979	1028
108"	153	197	239	300	366	449	495	585	744	834	901	961	1017	1085
120"	161	216	279	342	400	522	528	636	793	876	961	1010	1085	1150
132"	177	237	303	369	430	556	563	681	843	928	1016	1065	1143	1212
144"	193	255	327	394	462	588	601	725	891	981	1068	1122	1205	1273
156"	206	276	349	422	493	623	637	768	942	1031	1123	1177	1265	1338
168"	222	296	372	448	522	654	674	814	991	1084	1177	1234	1323	1398
180"	238	317	394	475	552	686	711	858	1041	1137	1233	1289	1383	1460
192"	253	337	417	502	584	721	749	903	1091	1188	1287	1345	1442	1523

Longer sizes are available with some limitations, contact customer service for pricing and information

PRICE CHART 2

PHIFER SHEERWEAVE® 1000

← Width →

	37"	46"	55"	64"	73"	78"	84"	96"	109"	121"	132"	144"	156"	168"
36"	115	142	157	180	193	223	255	323	395	515	623	745	891	1024
48"	129	150	171	201	222	242	283	349	444	550	674	809	980	1152
60"	140	160	188	219	239	262	294	369	462	586	732	891	1078	1263
72"	148	171	207	242	262	289	339	395	486	632	810	1018	1188	1366
84"	175	196	226	260	290	328	362	434	533	685	867	1188	1366	1559
96"	196	215	248	283	322	362	400	483	567	742	943	1338	1483	1663
108"	255	274	314	353	393	442	476	558	624	805	1064	1483	1636	1780
120"	277	301	335	376	431	491	530	617	705	891	1219	1631	1817	1944
132"	303	331	367	412	471	538	583	677	777	971	1328	1772	1975	2124
144"	328	358	397	447	510	585	637	739	849	1053	1436	1913	2132	2299
156"	354	387	427	482	548	633	691	800	921	1133	1542	2052	2288	2477
168"	378	414	457	516	587	678	744	859	991	1213	1650	2192	2446	2655
180"	405	443	490	551	626	725	799	921	1063	1294	1758	2332	2603	2832
192"	430	471	522	586	666	774	852	980	1133	1376	1866	2472	2761	3009

Longer sizes are available with some limitations, contact customer service for pricing and information

For more Options please see pages 14-20

Prices subject to change without notice

PRICE CHARTS 3 & 4

PRICE CHART 3

**PHIFER SHEERWEAVE[®] 3000, 7500R,
SUNTEX 80, SUNTEX 90, MERMET[®] AVILA DAYLIGHT
AUTOMATED MOTORIZED SHADES SIGNATURE SERIES 1%, 3%, 5% & 10%,
ORIENT LIGHT FILTERING & TRANSPARENT, TRENTO, VERONA**

← Width →

	37"	46"	55"	64"	73"	78"	84"	96"	109"	121"	132"	144"	156"	168"
36"	117	143	159	186	196	228	255	295	403	522	632	742	869	1008
48"	129	151	175	202	224	245	287	317	447	560	678	819	966	1124
60"	141	162	195	224	245	263	303	343	469	594	737	895	1077	1260
72"	151	175	213	248	263	292	346	369	495	636	817	1048	1260	1403
84"	177	197	228	267	295	331	369	403	539	692	874	1106	1350	1530
96"	197	218	251	287	327	367	407	442	578	751	952	1315	1441	1595
108"	245	267	317	351	373	444	492	571	648	799	1041	1441	1657	1845
120"	277	301	351	382	444	505	556	632	711	862	1172	1581	1815	2030
132"	305	333	388	423	493	560	619	701	789	952	1276	1721	1976	2204
144"	333	367	425	463	539	616	682	769	869	1042	1383	1860	2135	2380
156"	362	397	462	504	588	672	747	840	947	1133	1489	1998	2294	2556
168"	389	428	499	544	636	728	809	910	1024	1223	1593	2139	2453	2733
180"	417	461	534	585	684	782	872	981	1104	1312	1698	2278	2613	2910
192"	445	493	572	626	733	839	935	1048	1182	1401	1804	2416	2774	3085

↑ Height ↓

Longer sizes are available with some limitations, contact customer service for pricing and information

PRICE CHART 4

**PHIFER SHEERWEAVE[®] 2100, 2360, 2710, 4100, 7250R, 7750R,
BASIC 3% & 5%, AVILA TWILIGHT (NON FR), VERONA DAYLIGHT
MERMET[®] E SCREEN 5% & 10%, M SCREEN 5%,
AUTOMATED MOTORIZED SHADES ORIENT B/O, ORIENT LIGHT
FILTERING FR, PUGLIA, RIMINI SORRENTO B/O,
TRENTO B/O WHITE BACKING, VENEZIA**

← Width →

	37"	46"	55"	64"	73"	78"	84"	96"	109"	121"	132"	144"	156"	168"
36"	155	195	213	251	260	307	346	399	542	702	852	907	1045	1203
48"	171	204	235	272	294	328	378	429	596	739	926	1009	1150	1343
60"	191	219	254	294	322	350	405	451	614	785	974	1074	1287	1504
72"	204	239	280	332	360	401	462	493	666	866	1113	1253	1504	1677
84"	240	266	307	360	397	447	493	542	725	934	1185	1320	1614	1838
96"	263	292	334	382	439	493	547	590	776	1004	1281	1571	1726	1907
108"	322	350	405	462	505	586	641	754	836	1074	1387	1721	1981	2204
120"	367	399	462	507	586	655	725	836	934	1158	1546	1894	2170	2422
132"	403	443	511	561	642	719	798	913	1019	1250	1686	2069	2361	2631
144"	442	485	562	616	700	781	870	991	1104	1342	1828	2244	2550	2840
156"	480	529	614	671	758	845	942	1068	1190	1431	1968	2418	2742	3048
168"	518	572	664	725	814	909	1016	1144	1273	1523	2110	2594	2932	3259
180"	556	615	715	779	871	971	1086	1224	1359	1614	2249	2770	3122	3467
192"	594	657	765	834	928	1036	1158	1301	1443	1706	2392	2942	3312	3677

↑ Height ↓

Longer sizes are available with some limitations, contact customer service for pricing and information

For more Options please see pages 14-20

Prices subject to change without notice

PRICE CHARTS 5 & 6

PRICE CHART 5

PHIFER SHEERWEAVE® 2000, 2390, 2410, 2703, 2705, 4000, 4500, 7200R, 7500, 7650, 7850, SUNTEX 95, MERMET® E SCREEN 3%, M SCREEN DECO 3% & 5%, M SCREEN 3%, S SCREEN 4%, T SCREEN 3%, T SCREEN DECO 3% & 5%, AUTOMATED MOTORIZED SHADES LINEN LOOK B/O, MAMBO, ORIENT B/O FR

← Width →

	37"	46"	55"	64"	73"	78"	84"	96"	109"	121"	132"	144"	156"	168"
36"	171	216	236	277	291	371	385	463	606	782	951	1035	1174	1354
48"	191	228	260	303	331	417	456	491	664	822	1021	1142	1313	1516
60"	207	241	285	323	356	448	499	521	686	869	1092	1218	1455	1697
72"	228	266	314	370	399	491	513	556	748	951	1231	1412	1693	1888
84"	266	294	342	400	443	547	558	616	812	1048	1325	1511	1845	2070
96"	294	329	375	428	491	604	614	666	869	1124	1412	1749	1987	2153
108"	342	374	427	513	560	666	681	787	893	1203	1464	1851	2145	2384
120"	389	425	513	540	614	766	787	880	983	1286	1639	2024	2357	2610
132"	434	472	569	600	675	840	871	970	1082	1388	1799	2222	2575	2847
144"	477	520	624	660	740	913	953	1061	1180	1492	1961	2418	2792	3085
156"	519	569	678	720	802	988	1037	1153	1280	1593	2123	2617	3012	3325
168"	562	617	733	778	868	1060	1122	1246	1380	1696	2283	2814	3230	3561
180"	606	665	787	839	929	1134	1206	1335	1478	1799	2442	3013	3447	3801
192"	647	713	842	897	994	1208	1288	1426	1576	1902	2604	3210	3666	4040

Longer sizes are available with some limitations, contact customer service for pricing and information

PRICE CHART 6

PHIFER SHEERWEAVE® 2500, 2701, 4400, 4600, 4650, 4800, 4901, 5000, 7100, 7700R, SUNTEX 90 DESIGN, SUNTEX 97, MERMET® E SCREEN 1%, E SCREEN DECO, M SCREEN 1%, NATTE, S SCREEN 1%, T SCREEN 1%, T SCREEN DECO 1%, AUTOMATED MOTORIZED SHADES BLUES, ECO SILK, FASHION SCREEN, MILAN B/O, REVE, VERONA B/O, VINYL FR, VINYL

← Width →

	37"	46"	55"	64"	73"	78"	84"	96"	109"	121"	132"	144"	156"	168"
36"	180	224	247	290	301	374	400	485	628	814	994	1093	1240	1417
48"	198	239	273	316	348	434	475	512	693	852	1065	1198	1386	1599
60"	218	253	296	334	370	471	512	560	718	886	1134	1285	1532	1785
72"	250	277	329	388	415	507	536	601	779	994	1278	1493	1785	1991
84"	277	308	357	415	458	579	624	666	849	1093	1381	1599	1943	2184
96"	308	343	393	448	511	614	639	721	904	1159	1479	1832	2105	2264
108"	374	408	468	533	585	715	735	840	965	1252	1599	2037	2371	2651
120"	425	465	533	596	664	814	854	933	1065	1331	1799	2238	2610	2877
132"	471	513	589	657	733	891	942	1031	1172	1444	1963	2446	2841	3125
144"	516	565	645	722	801	970	1030	1132	1278	1557	2129	2654	3072	3374
156"	561	616	701	785	870	1048	1119	1230	1386	1670	2293	2860	3305	3625
168"	607	666	758	849	938	1129	1209	1328	1493	1782	2456	3068	3539	3876
180"	653	718	813	911	1007	1208	1296	1426	1599	1897	2623	3276	3770	4124
192"	699	767	869	974	1075	1286	1386	1525	1705	2010	2788	3483	4002	4374

Longer sizes are available with some limitations, contact customer service for pricing and information

For more Options please see pages 14-20

Prices subject to change without notice

PRICE CHARTS 7 & 8

PRICE CHART 7

PHIFER SHEERWEAVE °7450, 7600, 7800, INFINITY, 5%,
MERMET ° AVILA TWILIGHT FR, E SCREEN KOOL BLACK 5%, T SCREEN
 KOOL BLACK, VERONA TWILIGHT
**AUTOMATED MOTORIZED SHADES ECO LUX, LINEN, POMPEI, SATINO,
 SWING, VARESE**

← Width →

	37"	46"	55"	64"	73"	78"	84"	96"	109"	121"	132"	144"	156"	168"
36"	206	261	287	337	354	437	469	565	737	952	1168	1281	1426	1637
48"	224	277	317	369	407	505	553	604	812	994	1247	1399	1595	1845
60"	253	295	348	393	430	550	604	652	840	1036	1329	1506	1762	2056
72"	292	323	384	451	484	594	632	700	914	1168	1497	1750	2056	2293
84"	327	359	422	484	537	678	731	782	994	1281	1609	1874	2238	2518
96"	359	398	458	524	604	721	751	840	1061	1358	1734	2141	2419	2601
108"	435	477	548	625	683	836	859	981	1126	1469	1874	2376	2726	3046
120"	498	543	625	698	778	952	997	1092	1247	1563	2097	2616	3007	3298
132"	549	600	686	769	858	1041	1098	1203	1368	1697	2286	2843	3270	3579
144"	601	656	751	844	938	1131	1198	1315	1491	1830	2475	3072	3532	3859
156"	653	713	814	916	1018	1218	1301	1425	1611	1963	2663	3301	3795	4139
168"	705	769	877	991	1098	1306	1401	1536	1733	2096	2854	3533	4057	4420
180"	758	829	941	1064	1177	1397	1504	1650	1855	2229	3043	3762	4318	4700
192"	809	886	1005	1139	1259	1484	1605	1761	1977	2362	3232	3991	4580	4979

↑ Height ↓

Longer sizes are available with some limitations, contact customer service for pricing and information

PRICE CHART 8

PHIFER SHEERWEAVE ° 2390+, 2410+, 2500+, 7000, 7400
 INFINITY 1% & 3%
MERMET ° E SCREEN CHROMA 3%, E SCREEN KOOL BLACK 1% & 3%,
 FLOCKE, M SCREEN CHROMA 3%

← Width →

	37"	46"	55"	64"	73"	78"	84"	96"	109"	121"	132"	144"	156"	168"
36"	228	364	371	439	447	455	616	727	816	952	1191	1302	1469	1694
48"	261	426	437	503	509	525	661	773	872	1036	1273	1469	1650	1888
60"	300	486	499	567	576	596	691	816	964	1063	1358	1568	1817	2097
72"	330	551	563	637	641	659	861	928	1075	1191	1537	1817	2112	2320
84"	364	615	633	698	702	728	889	1038	1187	1293	1678	1929	2307	2573
96"	439	738	754	766	773	799	924	1114	1298	1399	1789	2224	2475	2657
108"	475	805	817	834	837	869	1075	1262	1407	1482	1902	2448	2811	3104
120"	523	844	874	906	915	966	1171	1373	1534	1678	2167	2683	3076	3354
132"	578	909	943	982	1001	1065	1275	1491	1665	1815	2362	2923	3343	3628
144"	633	967	1009	1058	1084	1167	1382	1606	1797	1952	2557	3162	3609	3900
156"	686	1030	1077	1134	1168	1267	1487	1723	1926	2089	2753	3400	3876	4173
168"	741	1092	1144	1210	1251	1367	1592	1839	2057	2225	2949	3637	4140	4444
180"	795	1152	1212	1286	1335	1467	1697	1956	2187	2362	3143	3877	4407	4718
192"	852	1212	1280	1362	1419	1568	1803	2072	2318	2500	3338	4114	4674	4989

↑ Height ↓

Longer sizes are available with some limitations, contact customer service for pricing and information

For more Options please see pages 14-20

Prices subject to change without notice

OPTIONS

GALAXY CLUTCHES

The G-200 & G-400 Galaxy clutches use planetary gear technology to lift 24 to 53 lbs with approx. 30% less pull force than a normal R16 or R24 clutch.

Only available with a continuous plastic loop chain

Maximum chain length 144"

Can NOT use stop beads on Galaxy series clutches



G-200 GALAXY CLUTCH - \$60

- 1 1/2" tube: 24 lbs
- 2" tube: 18 lbs



G-400 GALAXY CLUTCH - \$116

- 1 1/2" tube: 53 lbs
- 2" tube: 40 lbs
- 2 1/2" tube: 32 lbs
- 3" tube: 26 lbs

GSA-400 GALAXY SPRING ASSIST CLUTCH - \$245

- 1 1/2" tube: 53 lbs
- 2" tube: 40 lbs
- 2 1/2" tube: 32 lbs
- 3" tube: 26 lbs
- Uses less pull force than a standard G-400 Control
- Minimum width: 125"

INFINITY BRACKETS - \$30

Our Infinity Shade System™ is a sleek, modern, commercial system that has been designed to minimize light gaps and compliment modern decor. The unique, polished Infinity™ bracket features a smooth, flush finish and conceals the appearance of the clutch mechanism perfectly. Available in two sizes and multiple colors, this shade system is ideal for a full range of sizes.

Available in White, Black, Anodized & Chrome

Only compatible with Skyline Clutches and/or Motors with a Skyline adapter.



DUAL SHADE BRACKETS

Skyline Clutch Dual Shade Brackets allow you to mount two separate shades on a single mounting bracket.



Easier, space saving installation
Available in Vertical Mount (left) & Offset Mount (right)
Dual shades can also be used in a 5" fascia
Dual shade brackets are NOT compatible with all clutch and top treatment options

Note: The length of your shade is limited and based on the width of the shade, the size of the tube and the fabric used. Call for more details.

Prices subject to change without notice

OPTIONS

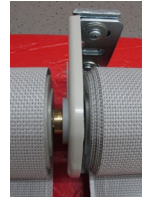
INTERMEDIATE BRACKET (COUPLER) FOR MANUAL SHADES

An ideal solution for linking multiple shades using one manual control. The slim profile reduces the light gap between shades.

Link up to three roller shades

Also available for fascia and motorized systems

Some size restrictions may apply based upon fabric, shade width, and shade height.



EXTERIOR CLUTCHES

- R16 Exterior Clutch - \$35
- R24 Exterior Clutch - \$60
- Galaxy Exterior Clutch - \$135

The Exterior Clutch system is specifically engineered and warranted for exterior use. Stainless steel springs provide superior performance in most weather conditions. These clutches are perfect for patios, boats, RV's and many other outdoor applications.

The Outdoor Clutch should only be used with fabrics that are approved for exterior use.



CORDLESS SYSTEM

Cordless shade solution for roller shade applications. Smooth shade operation available in 2 styles, a decorative cassette or with a simple top rail system.



Sleek appearance
 Easy installation
 Minimum Width 18"
 Max Width 96" & Max Length 96"
 Safe for children and pets
See Cordless System Price Chart for Pricing

Width	37"	46"	55"	64"	73"	78"	84"	96"	109"	121"	132"	144"	156"	168"
Cassette	164	202	242	286	321	343	369	422	Note: Cordless System Max Size is 96" x 72"					
Rail	89	111	132	153	175	187	201	229						

Note: The length of your shade is limited and based on the width of the shade, the size of the tube and the fabric used. Call for more details.

Prices subject to change without notice

OPTIONS

EXTERIOR CABLE GUIDE SYSTEM

Our heavy duty exterior cable system is designed as a true outdoor use solution for all of your exterior roller shade applications. The shade is firmly secured using stainless steel guide rods attached at the top of the shade and connected to the floor, wall, or bottom frame.

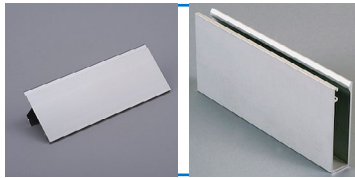
*Outdoor approved (should only be used with exterior fabrics)
Manufactured to stand up to moisture, wind and temperature changes
Not warranted against damage caused by high winds and extreme weather conditions*

Surcharge
\$1080



2 1/2" SIDE CHANNEL

Use to provide light blockage on the sides of your shade. Combine with a Fascia or a Headbox for maximum light blockage

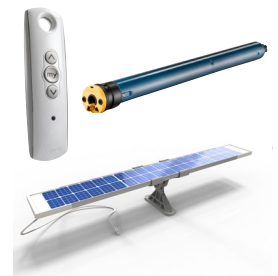


- 2 1/2" 1pc Side Channel w/ felt insert (right) - \$36 per foot of window height
 - Bottom Channel (left) - \$18 per foot of window width
- 2 Piece system snaps together to hide your mounting screws
Channel Colors: White, Anodized & Bronze.
Felt Insert colors: White, Gray & Black.*

MOTORIZATION

The automation of window treatments is the fastest growing segment of the window covering industry. From simple battery operated motors and complete systems that are fully compatible with most automation systems, to motors that are integrated into the window treatment and totally concealed, home or building automation options offer endless decoration possibilities.

See our Motorization Pricing Guide for Prices & Details



FLAT "L" FASCIA

A simple way to hide your shade along with the mounting brackets. The fascia bracket holds the shade and allows the fascia to snap into place. Available in 3", 4", 5", and 7".

- 3" & 4" Fascia End Caps (Pair): \$15
- 5" Fascia End Caps (Pair): \$30
- 7" Fascia End Caps (Pair): \$43

Colors: White, Vanilla, Anodized, or Bronze (OB End Caps are available for an additional charge) 3" fascia has 2 bracket styles. One for the RollEase® R8 clutch, the other for the R16, please specify when ordering. 4" fascia bracket works for either the RollEase® R16, R24, G200, or G400 clutch. 5" fascia brackets are compatible with Skyline series clutches. 7" fascia brackets work exclusively with motorized shades.



FASCIA PRICING

	37"	46"	55"	64"	73"	78"	84"	96"	109"	121"	132"	144"	156"	168"
3"	93	111	129	142	154	164	178	198	219	240	261	282	303	339
4"	110	138	151	178	186	201	212	234	259	281	303	328	349	372
5"	170	212	231	268	287	306	326	361	397	432	467	503	539	576
7"	372	415	457	499	542	564	592	648	709	766	816	873	928	985

Note: The length of your shade is limited and based on the width of the shade, the size of the tube and the fabric used. Call for more details.

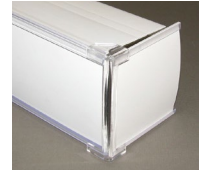
Prices subject to change without notice

OPTIONS

3 1/2" DUST COVER VALANCE

Standard vertical valance with shade fabric insert, supplied with returns.

Some inserts will be two or more pieces depending on the width of the valance and the width of the shade fabric. The fabric can be railroaded but may be a different direction than the shade fabric.

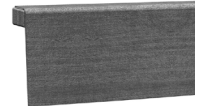


IB SHADE VALANCE

Shade fabric mounted on a wrapped board gives your shade a clean look.

Standard board size is 1" x 1 5/8" and available up to 1" x 4" at no additional charge.

No returns available with this valance.

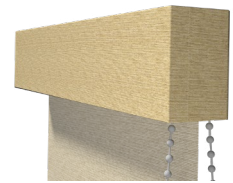


OB SHADE VALANCE

Shade fabric mounted on a wrapped board the same as the IB valance with additional fabric wrapped around the sides as returns. Special hem bar inserts are supplied for a clean corner.

Standard board size is 1" x 2 1/2" and available up to 1" x 4" at no additional charge.

Returns will be the board depth unless otherwise specified.



VALANCE PRICING

Width	37"	46"	55"	64"	73"	78"	84"	96"	109"	121"	132"	144"	156"	168"
3 1/2" PVC	50	62	71	84	94	102	107	123	141	157	168	184	199	214
8" IB	114	142	169	197	224	239	258	294	333	370	404	441	476	512
8" OB w/ returns	145	179	212	245	281	300	321	368	418	465	504	549	596	641

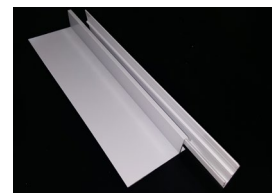
*Valances over 8" in height add \$3 per inch up to a maximum of 12"
Note: For motorization surcharges consult the Motorization Price Guide*

HANGER WITH 3" FLAP

Use when a bottom flap is needed, as in a custom pocket area. The other uses are only limited by your design.

- Hanger & 3" Flap \$24 per ft

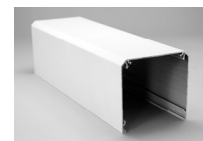
No Brackets, Color: White



4" & 5" HEAD BOX WITH CLOSURE

For the times when a complete enclosure is needed. Used for drop ceiling applications or when you want to hide the front and back of the complete shade

No Brackets, Color: White



5 INCH POCKET BOX PRICES

Width	37"	46"	55"	64"	73"	78"	84"	96"	109"	121"	132"	144"	156"	168"
Pocket Box	239	297	355	413	470	503	542	618	701	778	849	926	1003	1079
Bottom Closure	42	51	61	70	80	85	91	104	118	131	142	156	168	182
End Caps per pair	34	34	34	34	34	34	34	34	34	34	34	34	34	34

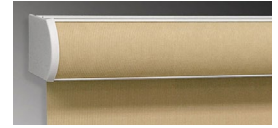
Note: The length of your shade is limited and based on the width of the shade, the size of the tube and the fabric used. Call for more details.

Prices subject to change without notice

OPTIONS

CASSETTE OPTIONS

Used to tie the headrail to the fabric using an insert or just a simple way to cover the innerworks of the shade. There are three different options for the cassettes to match and work with the system best for you.



Cassette 120

CASSETTE 100

Width	37"	46"	55"	64"	73"	78"	84"	96"	109"	121"	132"	144"	156"	168"
w Insert	141	174	209	241	276	295	317	361	409	480	495	542	584	630
w/o Insert	113	151	169	205	218	237	255	280	304	329	355	387	418	449

CASSETTE 120

Width	37"	46"	55"	64"	73"	78"	84"	96"	109"	121"	132"	144"	156"	168"
w Insert	151	185	221	258	294	314	337	385	437	485	529	576	624	671
w/o Insert	121	165	186	225	245	266	297	304	329	367	390	416	441	471

Brackets are included in the price. Colors: White, Vanilla, Anodized, Bronze & Black.

SQUARE CASSETTE

Width	37"	46"	55"	64"	73"	78"	84"	96"	109"	121"	132"	144"	156"	168"
w Insert	141	174	209	241	276	295	317	361	409	480	495	542	584	630
w/o Insert	113	151	169	205	218	237	255	280	304	329	355	387	418	449

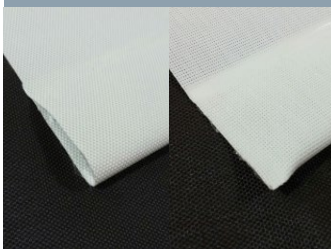
Colors: White, Vanilla, Anodized, Bronze & Black.

BOTTOM HEM & RAIL OPTIONS

HEAT SEALED HEMBAR*

Aluminum hembar inserted into a fabric hem with standard open ends or with optional sealed ends

**Included In Roller Shade Price*



SLIM BOTTOM RAIL

Optional decorative slim profile hembar perfect for tight spaces and shades requiring side rails. Available with or without felt.

Price Chart below



Prices subject to change without notice

OPTIONS

CUSTOM PRINTING

At Automated Motorized Shades® we know that customization is key. Our custom printing services allow interior designers to design custom patterns to match decor. From full bleed images to tiled, decorative patterns, your printing options are endless. Choose from a variety of printable solar screen fabrics to create unique, exclusive shades for your clients.



SPECIFICATIONS & GUIDELINES

- File Types: .AI, .EPS, .JPG, .PDF, .PS, .PSD, .TIF
- Outline all fonts
- Maximum print width 126"
- DPI: 75 minimum, 150 Optimal
- Bleed: .5" per side
- Include .PDF so we can verify your file layout
- Please Call for pricing

FEATURES

- Water Based Latex Inks, the most environmentally conscious printing method available
- Odorless prints are GREENGUARD Children and Schools certified
- Inks are non-flammable and non-combustible
- Up to 1 Hour of Set-Up Time Included in Pricing

*Note: The length of your shade is limited and based on the width of the shade, the size of the tube and the fabric used. Call for more details.
Minimum Printed Shade Order \$200*

PERSONALIZED CONTROLS

Allow Automated Motorized Shades® to customize controls including wall switches and remotes. This added feature allows you to individualize each order for your clients. Whether the controls are bright and colorful for a child's room, or simplistic and modern for a living room, our custom, made-to-order patterns are sure to "wow" your customers.

Please Call for Pricing



Prices subject to change without notice

CHILD SAFETY & WARRANTY

CHILD SAFETY

Every product we send out meets or exceeds the latest safety standards as set forth by the Consumer Product Safety Council and the Window Covering Manufacturers Association. For enhanced safety, Automated Motorized Shades offers cordless and motorized window treatments.

REMEMBER THESE SAFETY RULES...

- For children's bedrooms only install window coverings that are cordless.
- Any window coverings in your home that were made before 2001, should be replaced with today's newer, safer models.
- Do not place furniture near windows that have window coverings with cords.
- Keep all cords out of reach from small children. Do this by securing tasseled pull cords out of reach with a cord cleat, and anchoring continuous-loop cords to the wall with safety devices.
- Always be sure to lock and firmly secure cords in position.
- Products such as Roman or Woven Wood Shades that have accessible back cords, should not be installed within reach of children.

All products come with safety labels attached. This is to help raise awareness of the potential safety risks associated with the products you purchase. If you have any concerns, please do not hesitate to contact us directly. You may also directly contact any of the associations that create the safety standards with any questions or concerns. Child safety is our top priority!

WARRANTY

Automated Motorized Shades guarantees all products manufactured in our facility to be free from defects due to faulty workmanship and/or materials. We are so confident about our quality and dependability that we back our manual shades with a limited lifetime warranty, our motors with a 5 year limited warranty, and our custom printed shades with a 3 year warranty against fading. All warranties are effective from the original invoice date of the product.

This guarantee does not apply to damage to exterior shades caused by high winds and/or extreme weather conditions. Any roller shade or parts which fail due to abuse, accident, theft, alterations, improper use or

installation, or gradual color fading, are also excluded from this warranty.

Automated Motorized Shades reserves the right to inspect products and will replace or repair any product found to be defective as a result of faulty workmanship or materials.

Shipping charges, trip charges and labor costs for measuring and installation and/or removal of old or current products are excluded. This

warranty is available to the original owner/purchaser and is non-transferable. Automated Motorized Shades' warranty is designed to ensure a thoroughly satisfying experience with your window treatment product. Certain restrictions may apply.

